

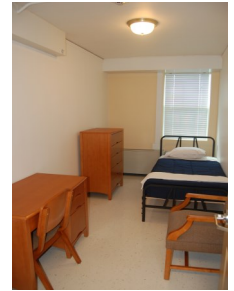


**FOR YOUTH DEVELOPMENT®
FOR HEALTHY LIVING
FOR SOCIAL RESPONSIBILITY**

The Gateway Family YMCA — Elizabeth Branch Housing Programs

RESIDENTIAL PROGRAMS

Through our programs, we impact the community by providing a home and support to our residents in a safe environment, with opportunities to restructure their lives. Our hope is that each individual and family will put their lives on the right track through the development of new skills, with the help of social service resources. Our nurturing staff provides the ongoing encouragement and tools needed to maintain a healthy and productive lifestyle. The Y takes pride in giving back and providing on-going support to our community. The Y has been listening and responding to our communities' most critical social needs for over 160 years.



TRANSITIONAL HOUSING:

The Men's Dormitory is a single room occupancy (SRO) unit for males 18 years and older. Residents have use of laundry facilities and an air-conditioned lounge with cable television. The men receive wrap-around social services to assist them in stabilizing their lives to obtain permanent housing.

The Women's Dormitory provides affordable permanent housing for 10 single women without children. The women share a bathroom space, and they have access to a full kitchen. Our goal is to provide a safe home for single independent women.



Madison House provides temporary housing for female heads of household and their children in a safe and caring environment. Through this initiative we assist families in making meaningful changes in their lives.

The Step-Up Transitional Housing Program is an extension of the YMCA Madison House. The individuals or families in Step-Up receive extensive support through our continuum of care system. This program has a strong emphasis on employment and training. Our staff provides the assistance needed to transition from homelessness to self-sufficiency.

Project Sustain is a Mommy and Me program designed for pregnant women and women with infants/toddlers who are in recovery from addiction. Our six-month residential program provides a safe and stable environment for the women and their infant/toddler children. Project Sustain participants are provided with wrap-around social services that help maintain their sobriety and stabilize their lives.

PERMANENT HOUSING:

Sierra Gardens is located directly across the street from the Elizabeth Branch main building. It provides families and individuals with low cost, affordable housing.

The Supportive Housing Program assists disabled, homeless individuals and families in the transition from homelessness to permanent housing; providing the participants with apartments in the community along with additional services.

For additional information please contact:
Social Services and Housing, 908-355-9622.

Referral Required for All Social Services

