



FOR YOUTH DEVELOPMENT®
FOR HEALTHY LIVING
FOR SOCIAL RESPONSIBILITY

ONCE UPON A SUMMER.



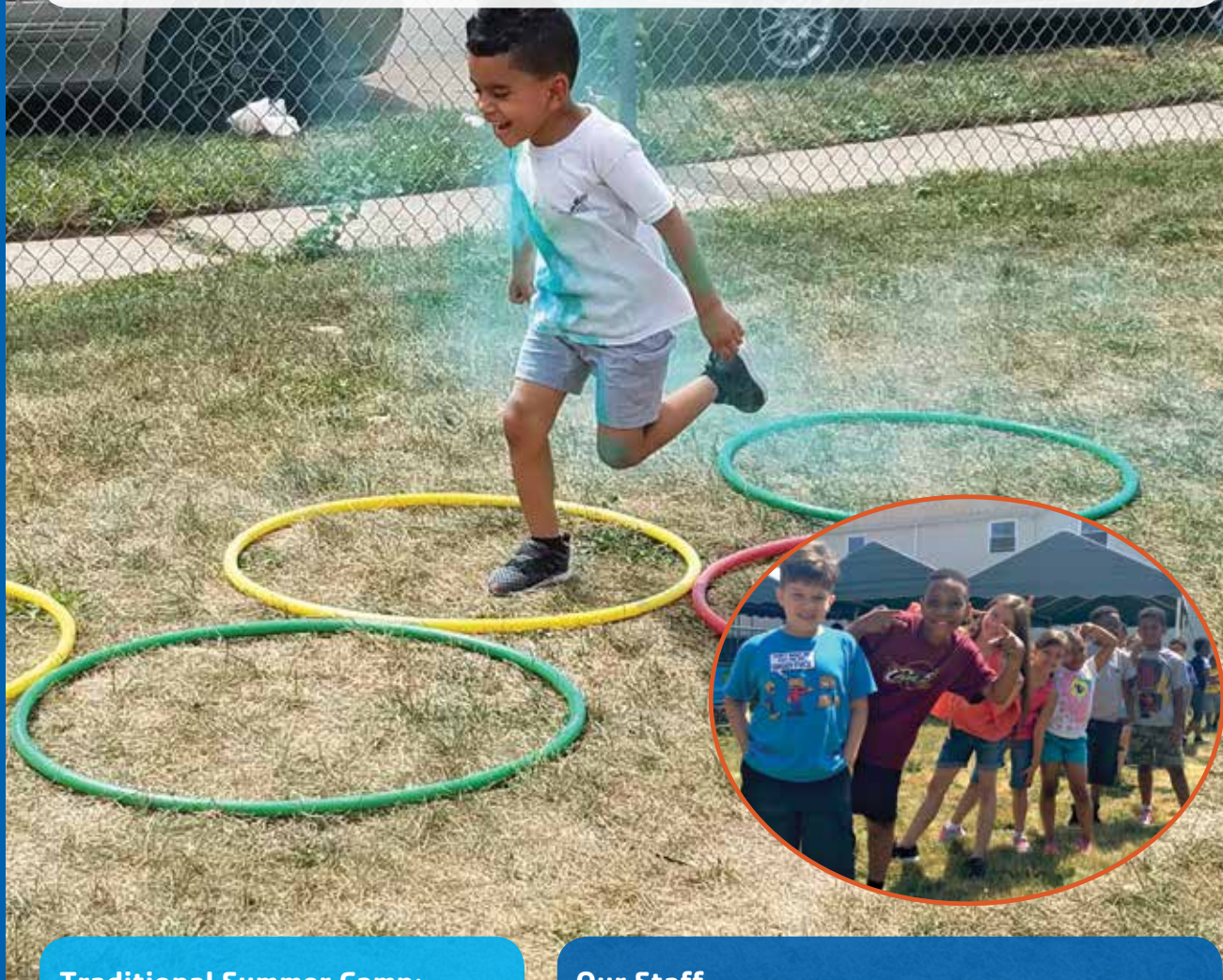
**SUMMER CAMP 2017
THE GATEWAY FAMILY YMCA
ELIZABETH BRANCH**

SUMMER CAMP INFORMATION

SUMMER CAMP INFORMATION

Dear Camp Families,

At the Y we feel that summer camp is a special time in a child's life. The best part; children will make new friends that will last a lifetime. We are ready for another exciting summer and are thrilled that your children will be spending it with us. The Elizabeth Branch YMCA has a great summer day camp experience awaiting them!



Traditional Summer Camp:

Traditional Summer Camp is for children entering kindergarten to eighth grade. Who wouldn't want to spend their summer meeting new friends, having fun, and making cool discoveries about themselves and the world they live in? Camp offers all of these things and more in a structured environment that also encourages free play, creativity and the development of positive self-esteem and confidence. Each day will start with a morning circle to get campers energized and excited for the day! Children will be placed in small groups for activities that include sports of all sorts, arts and crafts, discovering nature and science and much more.

Our Staff

Here at the Elizabeth Branch YMCA we make taking care of your child our top priority. The best way to do that is to hire the best and brightest staff. Many of our camp counselors have grown up with the Y or are staff that work in our after care programs during the school year. They know the program, traditions, and values that our camps offer to help offer the best experience possible. At the YMCA, we carefully select and screen caring role models who demonstrate a passion for developing confidence and good character in the youth. Our camp staff attends trainings and must pass a rigorous background check and interview process before joining our team. Training includes CPR, First Aid, bullying and child abuse prevention and bus safety. We are dedicated to helping our campers learn, grow and play all within the pillars of our core values: caring, honesty, respect and responsibility.

INFORMATION FOR PARENTS

INFORMATION FOR PARENTS

How to Register:

1. All parents must complete the registration forms located at the Elizabeth Branch YMCA. All original registration forms must be submitted at the Welcome Center by the parent. Registration forms cannot be faxed or emailed.
2. Campers are required to be a member of the Elizabeth Branch, throughout the length of their camp participation. For memberships applications and/or questions please contact the front desk.
3. Unfortunately we are not able to process refunds.
4. Space is available for each camp and week on a first come, first serve basis. The only way to guarantee a spot is to leave a deposit of \$30 for each week your child will be attending camp. This deposit is deducted from the total balance for the week. **If a deposit is not left, space is not guaranteed. Deposits are also non refundable, space is not guaranteed.**

Multi-Sibling Rate

We offer a multi-sibling rate for camp and child care participants. The oldest child will receive 10% off of the weekly rate. This rate applies to private pay participants.

Financial Assistance:

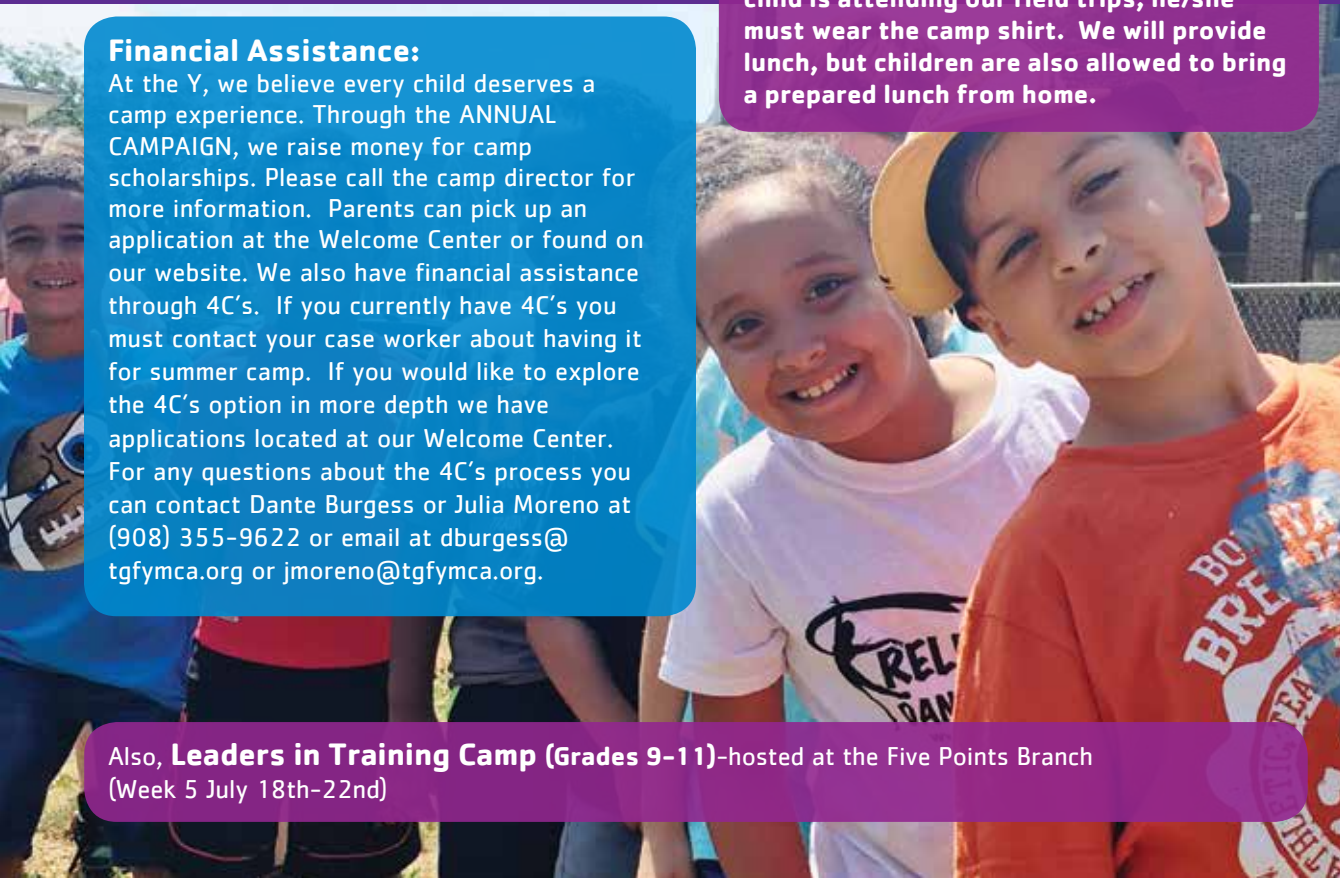
At the Y, we believe every child deserves a camp experience. Through the ANNUAL CAMPAIGN, we raise money for camp scholarships. Please call the camp director for more information. Parents can pick up an application at the Welcome Center or found on our website. We also have financial assistance through 4C's. If you currently have 4C's you must contact your case worker about having it for summer camp. If you would like to explore the 4C's option in more depth we have applications located at our Welcome Center. For any questions about the 4C's process you can contact Dante Burgess or Julia Moreno at (908) 355-9622 or email at dburgess@tgfymca.org or jmoreno@tgfymca.org.

Pre and Post Camp:

Early and extended hours are available for all age groups and camps. For this option, registration can be done a weekly basis or for multiple weeks. Payment is due at the time of registration. There is no daily payment for pre/post camp. Pre Camp starts at 7:00am until 8:30am and Post Camp begins at the end of the regular camp day (5pm) and runs until 6:30pm. Pre and Post Camp is held at your child's camp site unless otherwise noted in the camp description. During Post Camp a variety of activities such as organized games and crafts are provided for the campers.

Field Trips and Special Events:

Our field trips occur on Wednesdays are listed based on the week your child is attending. Camp trips are optional; any child not attending will have a traditional day at camp with fun-filled activities! Trips are an additional \$15 per trip, registration is mandatory. For each trip, there will a maximum capacity based on what can be accommodated for the trip location. In order to register for a field trip, your child must be registered for that week of camp with the balance paid in full. Once the field trip slots are filled, we cannot add on additional spaces or hold a spot on a field trip. **If your child is attending our field trips, he/she must wear the camp shirt. We will provide lunch, but children are also allowed to bring a prepared lunch from home.**



Also, **Leaders in Training Camp (Grades 9-11)**-hosted at the Five Points Branch (Week 5 July 18th-22nd)



The Gateway Family YMCA
Elizabeth Branch
135 Madison Avenue
Elizabeth, NJ 07201
www.tgfymca.org

**Non-Profit
organization
US Postage
PAID
Permit 58
Elizabeth, NJ**

Upcoming Open House Dates

Come meet the Camp Directors, learn more about camp, take a tour and get all your questions answered. You can also register at anytime!

- **Wednesday, March 22nd 6-8pm**
- **Saturday, April 29th 12-3pm**
- **Tuesday, May 16th 6-8pm**

Contact Information:

School Age Traditional Camp Director

Dante Burgess
dburgess@tgfymca.org

Program Administrator

Julia Moreno
jmoreno@tgfymca.org



Financial Assistance

The Y is a non-profit organization committed to strengthening the foundations of community. We believe all children should have the opportunity to attend summer camp and offer financial assistance to those who qualify.

In addition, the Y partners with and accepts 4C's.

For more information, contact Julia Moreno at jmoreno@tgfymca.org or (908) 355-9622